

# FAU College of Medicine Support Center

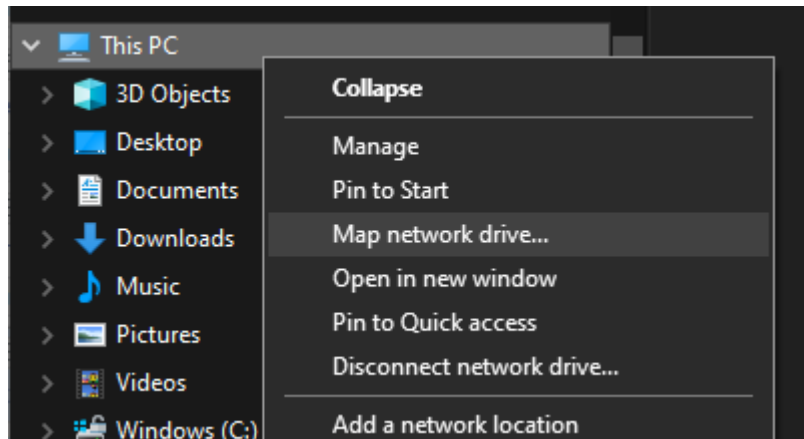
Knowledgebase > Network and Connectivity > Map network shared drive

## Map network shared drive

Brian - 2023-03-03 - Network and Connectivity

To map a network shared drive, please follow the examples below:


- Open File Explorer then right click on This PC in the left panel and select Map



network drive.

- Copy and Paste or type in the share location of the network drive you are mapping, remember to include the two \ symbols at the beginning of the name.

×

←  Map Network Drive

### What network folder would you like to map?

Specify the drive letter for the connection and the folder that you want to connect to:

Drive:

Folder:

Example: \\server\share

☒ Reconnect at sign-in

☐ Connect using different credentials

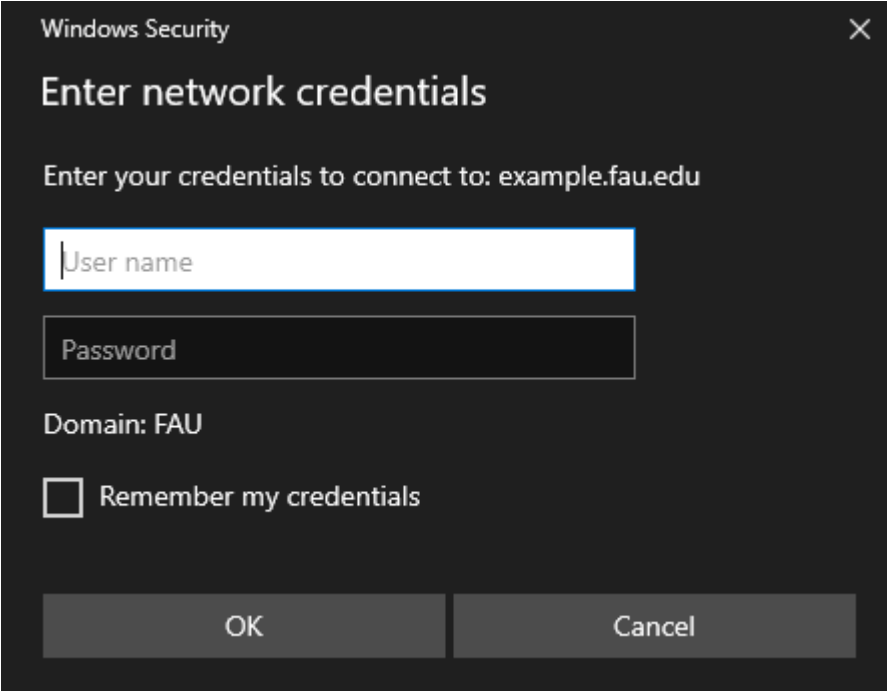
[Connect to a Web site that you can use to store your documents and pictures.](#)

Finish

Cancel

- If your shared drive requires special credentials other than your Windows login, please check the Connect using different credentials box and click Finish.
- If you specified different credentials, you will receive a popup box requesting you input the credentials. If you wish to save the credentials so you aren't prompted to

re-enter them every time your PC reboots, select the box next to Remember my credentials.



A Windows Security dialog box titled "Enter network credentials". It prompts the user to enter credentials to connect to "example.fau.edu". The dialog includes input fields for "User name" and "Password", a label for "Domain: FAU", a checkbox for "Remember my credentials", and "OK" and "Cancel" buttons at the bottom.

Windows Security

Enter network credentials

Enter your credentials to connect to: example.fau.edu

User name

Password

Domain: FAU

☐ Remember my credentials

OK Cancel